

MINI-MANTIS II

H-Beam Cutting Machine

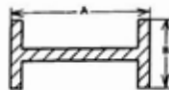
Features and Benefits

- **Three rail types**
Makes web and flange cutting easy and efficient.
- **Adjustable rail and rack bar angle**
Allows diagonal cuts on web and flange.
- **Flame pre-set function**
Set preheat only once; saves time and gas.
- **4-Way jog direction control**
Controls both flange and web cutting with one direction switch.
- **Long flange bar option**
For cutting of longer flanges up to 700 mm.
- **Lightweight and portable**
Easy to carry and use in tight spaces.

Semi-automated H-beam cutting

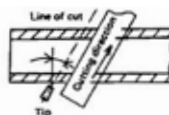
Ideal for H-beam and I-beam bevelling

The Mini-Mantis II provides straight or angled cuts that are clean and sharp. Two motors drives the torch for both web and flange cutting. There is no need to turn and mark the workpiece.

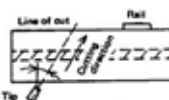


Right angle cutting capacity

- Web cutting ("A" in the diagram)
150 - 600 mm : 600-ST rail
150 - 900 mm : 900-ST rail
900 - 1500 mm : 1500-ST rail

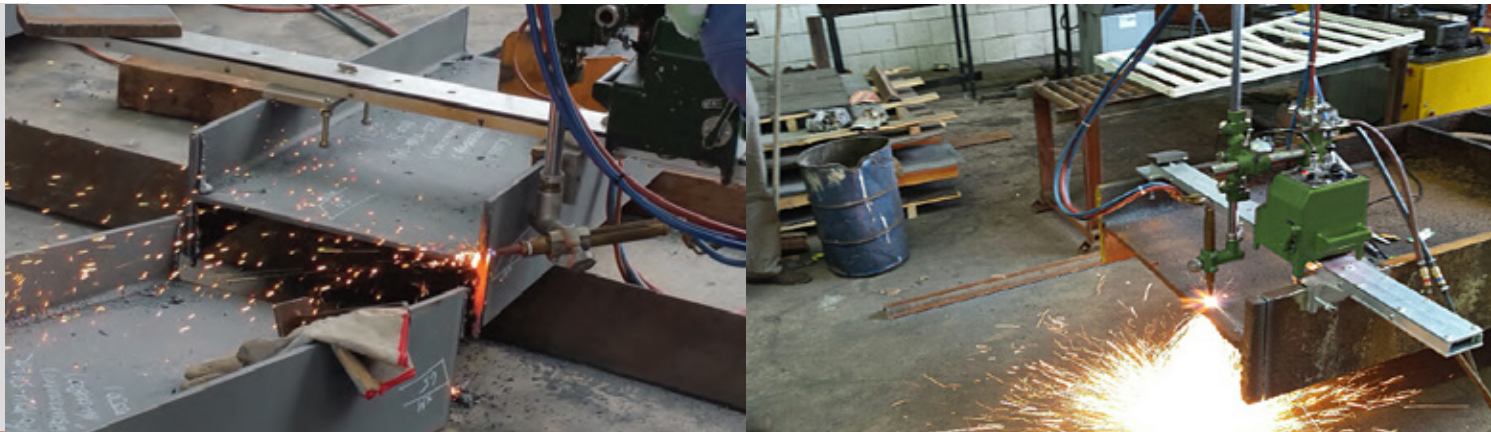


- Flange cutting ("B" in the diagram)
150 - 400 mm : Standard
150 - 700 mm : With optional slide bar 1200L



Angled cutting capacity

- 30° maximum for both web and flange cutting



The Mini-Mantis II is a semi-automatic gas cutting unit for rapid and precise cutting of H-beams. The rotatable torch angle allows bevelling cuts on flange and web. The vertical unit can be tilted for cutting flanges in angled directions. KOIKE's quality construction ensures durability and trouble-free operation. The Mini-Mantis II is an economical, efficient and compact gas cutting machine for H-beam steel.

Optional accessories

Accessory	Stock #	Description
600-ST rail	90234	600 mm effective cutting , rail lengths 1100 mm
900-ST rail	90235	900 mm effective cutting , rail lengths 1400 mm
1500-ST rail	90136	1500 mm effective cutting, rail lengths 2100 mm
Slide bar 1200L	32027	700 mm vertical stroke for flange cutting
Transformer AC230V - 110V	90100	For 110V models

Specification

Mini-Mantis II ST Set

Cutting thickness	5 - 30 mm
Cutting speed	100 - 700 mm
Bevel angle	0 ~ 35°
Speed control	Dial operation
Driving method	Web: Friction roller Flange: Rack and Pinion
Input power	AC 110V
Dimension (incl. vertical unit)	L350 x W350 x H880 mm
Weight	15 kg

Types

Model	Stock #
Mini-Mantis II ST 110V Set	90131

Scope of delivery

Machine body
ST-400 Vertical unit with torch unit
Power cable
Standard tool set
Operation manual
Cutting nozzles



EMEA Sales and Service Offices

FRANCE

KOIKE France S.A.R.L.
ZAC de la Vallée de L'aunelle
RN Cellules C1 à C4
59144 Wargnies-Le-Grand
T: +33 327304343

GERMANY

KOIKE EUROPE B.V. Germany Branch Office
Im Löchel 2
35423 Lich-Eberstadt
T: +49 6004916930

ITALY

KOIKE ITALIA Srl
Via Papa Giovanni XXIII, n 45
20053 - Rodano (Milano)
T: +39 0295328717

UAE

KOIKE MIDDLE EAST FZE
SAIF Zone Sharjah - UAE
P.O. Box 122978
T: +971 561177615

THE NETHERLANDS

KOIKE EUROPE B.V.
Grote Tocht 19
1507 CG Zaandam

T: +31 (0)75 612 72 27
F: +31 (0)75 612 34 61

info@koike-europe.com
www.koike-europe.com

R•A•M